

Capacity View - Free

VMware Storage and Server Capacity Alerts on your Desktop

VKernel Capacity View

Capacity View is a powerful tool that installs on your Windows desktop to provide quick visibility and alerting to the storage and server capacity issues in your VMware virtualized infrastructure. Capacity View can be installed and providing you with actionable information in less than 5 minutes.

Capacity View is easily connected to your ESX or vCenter server or to VKernel's VM Stats or Optimization Pack. It provides you with a high level summary of your data center that is simply not accessible through ESX or vCenter.

Capacity Alerting

Capacity View automatically collects data already existing in your VMware environment concerning CPU, memory and storage allocations and utilization levels. It then diagnoses this data to provide you with actionable alerts. Capacity View tells you where to drill down to solve capacity related problems.

Capacity View provides alerts for:

- Virtual machine I/O Latency
- Under-provisioned memory, CPU, storage
- Low capacity for new deployments
- Over-provisioned memory, CPU, storage

The VKernel Difference

VKernel delivers server and storage capacity management applications for VMware and Microsoft virtual environments. Our products address the unique challenge of virtualization - achieving optimal capacity utilization while assuring robust performance.

As opposed to our competition, our products are:

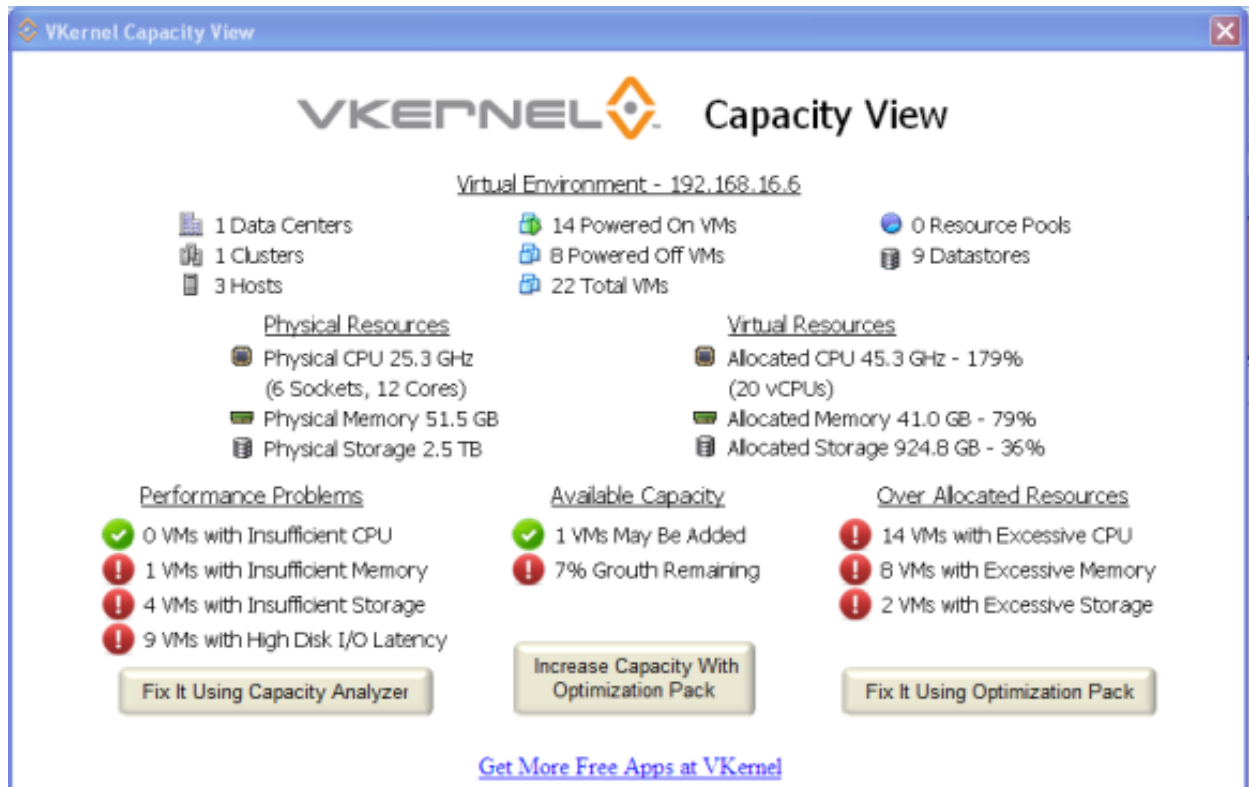
- Powerful tools that provide actionable information
- Quick to deliver value
- Easy to deploy and use, and
- Inexpensive

Deployment Statistics

Capacity View also provides you with an easily accessible view to how your virtualization resources are deployed. This valuable information allows you see the efficiency of your environment and how it can be improved.

Capacity View provides statistics for:

- # of VMs, hosts, data stores, clusters, etc.
- Total available CPU, memory and storage
- Resources allocated as a % of available



System Requirements

Capacity View requires the following

- VMware ESX 2.5 or higher or vCenter 2.5 or higher
- Windows (any current revision)

Support

For technical support please visit <http://www.vkernel.com/support> , email us at support@vkernel.com or call us at 978 289 6300.